
INIZIATIVA IMMOBILIARE
SAN QUIRINO, PORDENONE



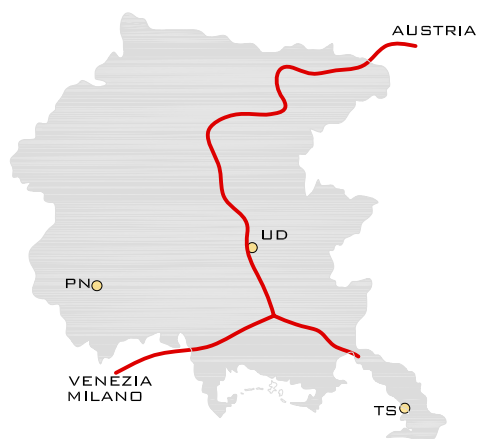
COMPLESSO INDUSTRIALE - ARTIGIANALE

UBICAZIONE E VIABILITA'

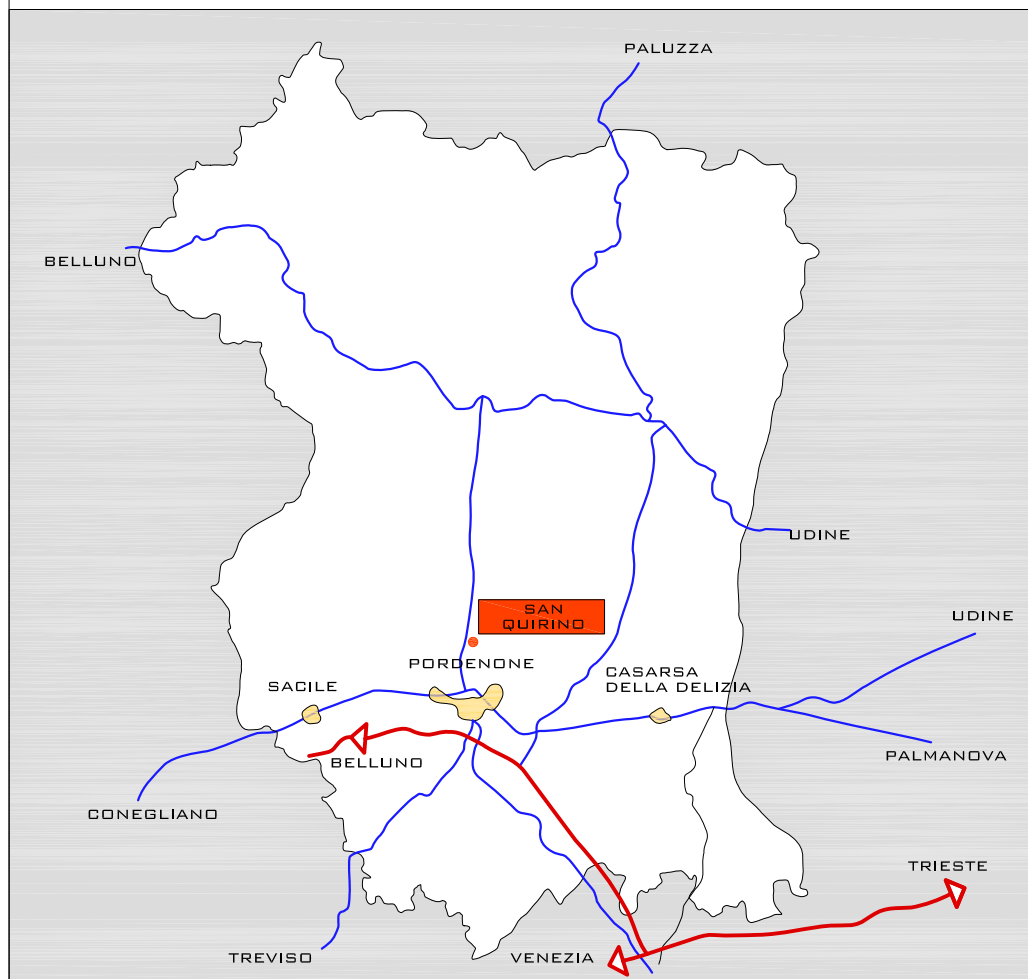
UBICAZIONE

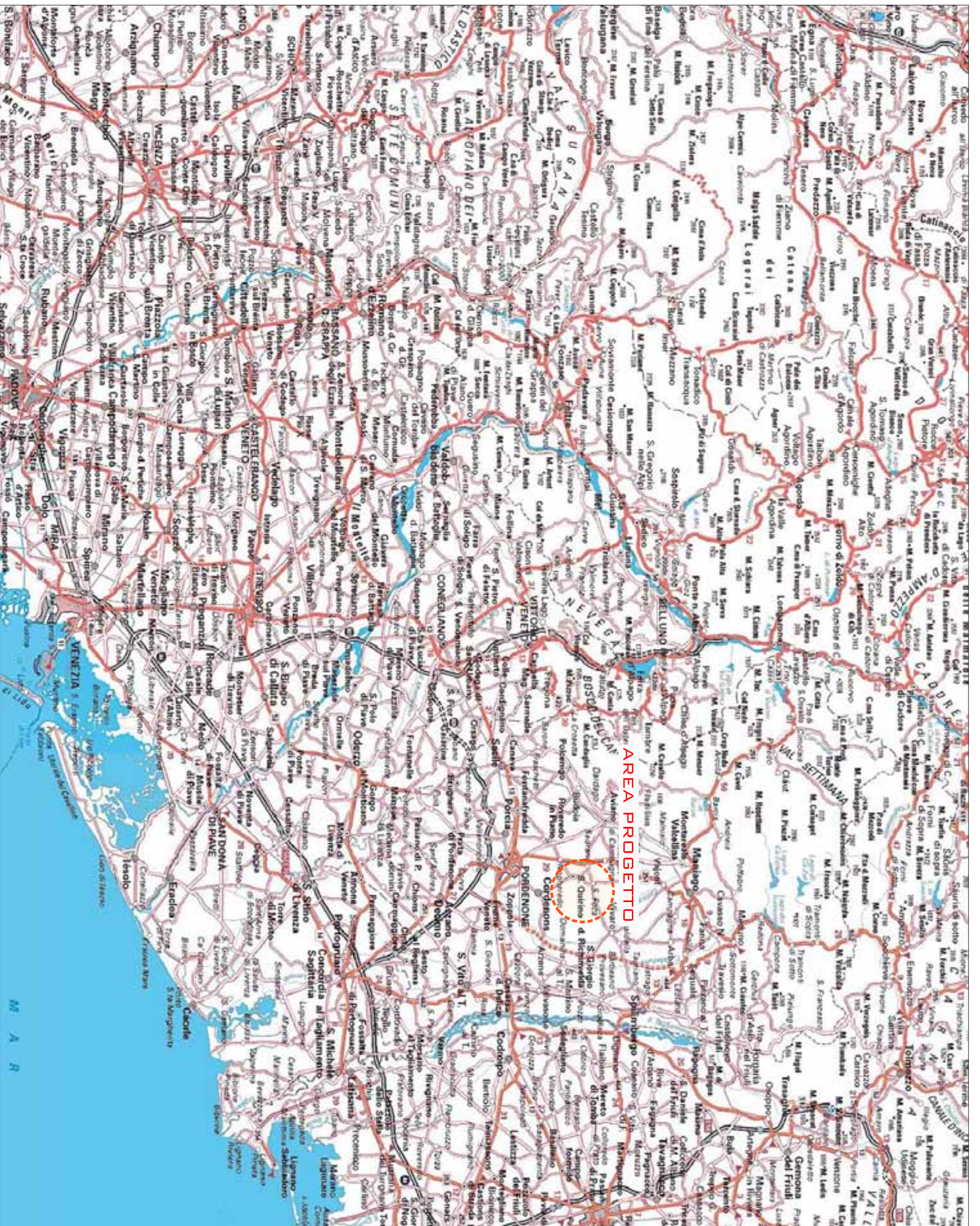
COMUNE DI SAN QUIRINO

-SULLA S.S. 251 PER LA VAL CELLINA
-A CIRCA KM. 8 A NORD AI PORDENONE
-A CIRCA KM.10 DALL'USCITA DELL'AUTOSTRADA A28
PORDENONE-PORTOGRUARO, CHE È DIRETTAMENTE COLLEGATA CON
L'AUTOSTRADA A4 TRIESTE-MILANO

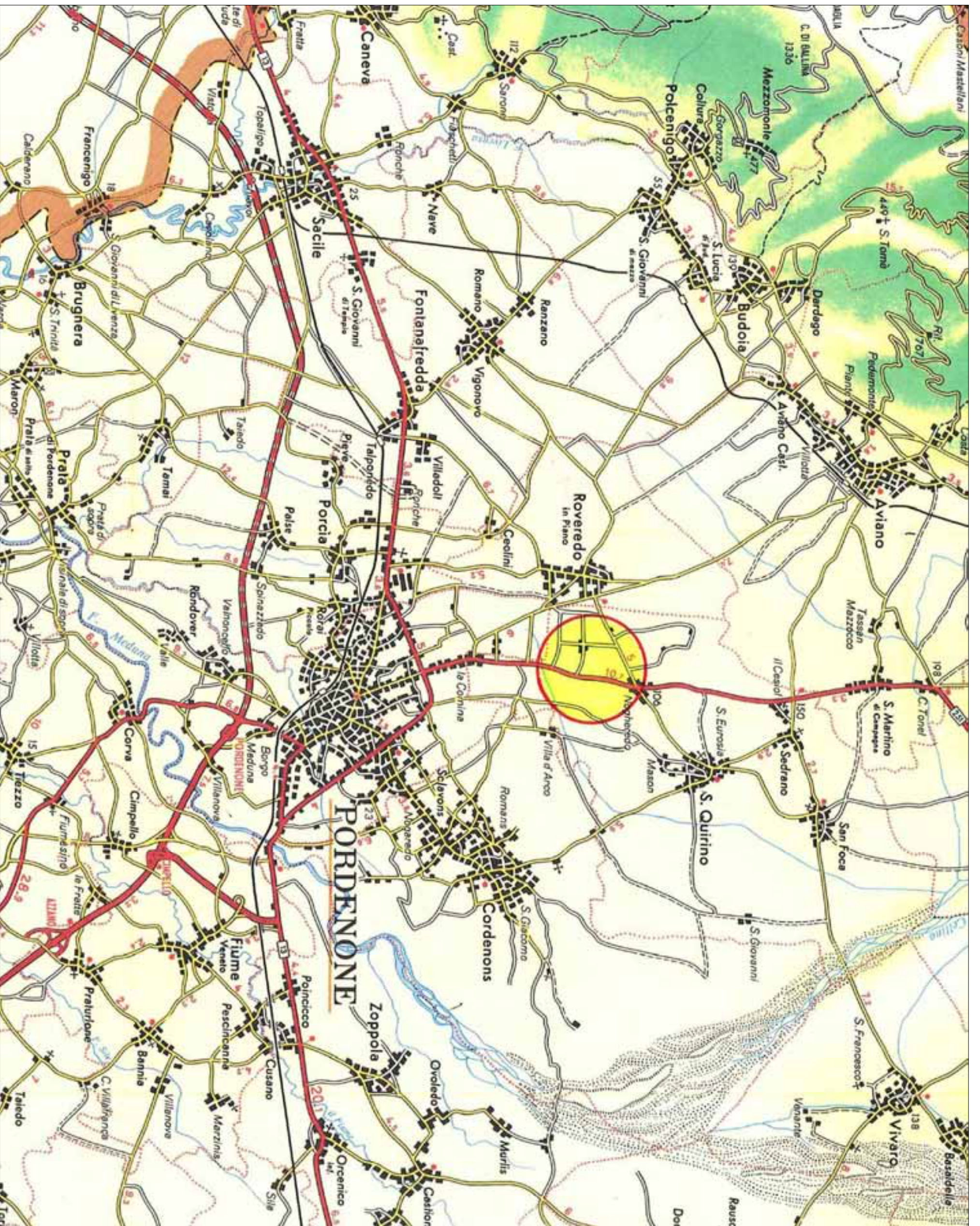


UBICAZIONE





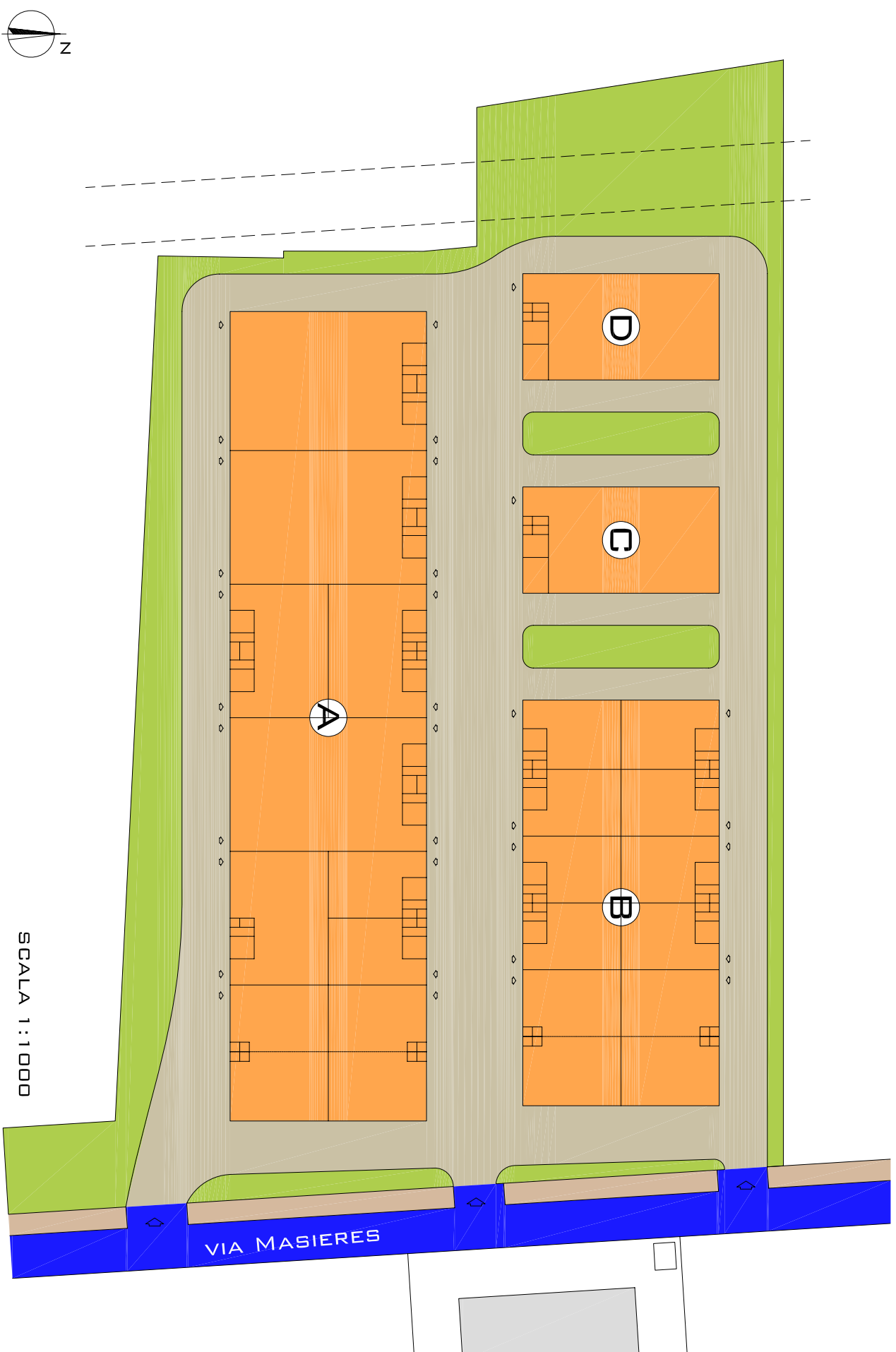
VIABILITA'
REGIONALE



VIABILITA'
LOCALE

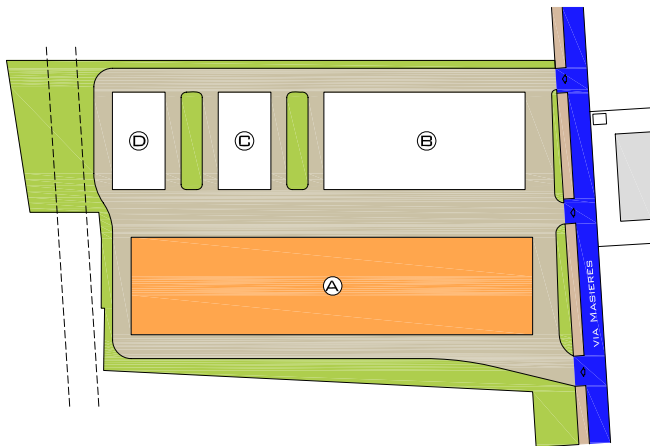
PROGETTO

- UNITA' INDUSTRIALI
- ALTRI EDIFICI
- AREA PARCHEGGI
- AREA A VERDE
- VIABILITA' LOCALE
- VIABILITA' INTERNA



PROGETTO

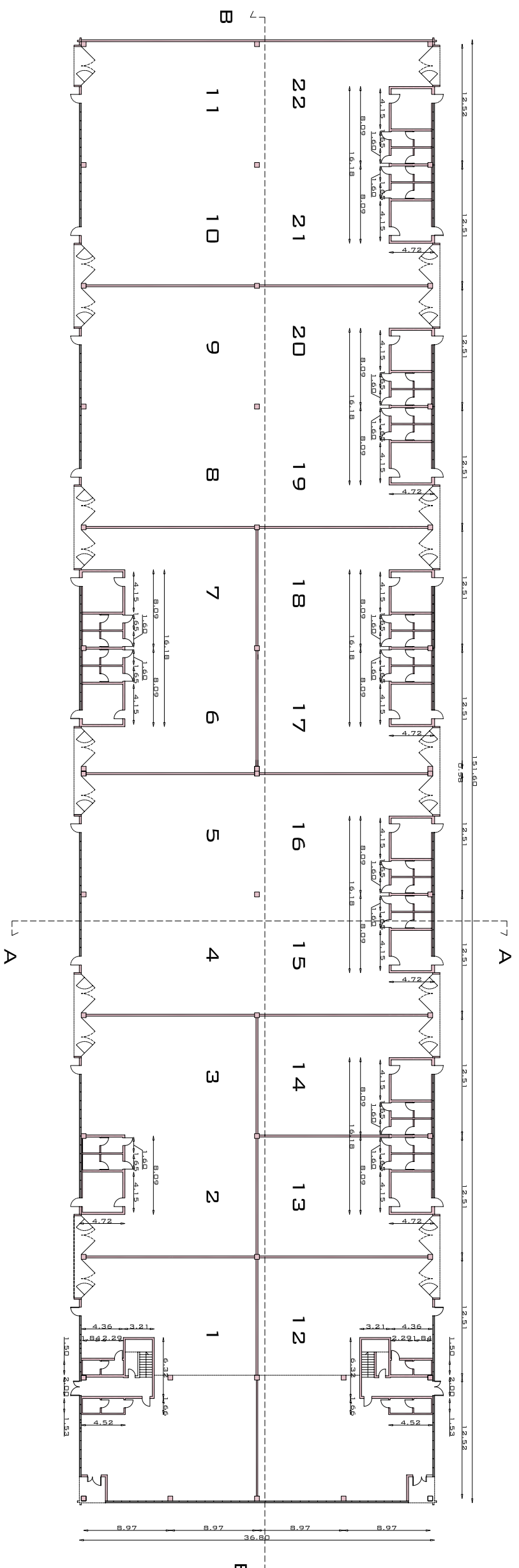
FABBRICATO "A"



DIMENSIONI FABBRICATO "A"

UNITA'	1	(18,40*25,49)-(6,12*3,01)-(4,46*2,23)+(4,40*1,00) (4,52*1,76)+(4,46*1,83)	= mq. = mq.	445,05 16,12	PIANO TERRA SERVIZI PT	mq.	461,17	
UNITA'	1/A	(6,12*3,01)+(4,46*2,23) (18,40*13,20) (3,91*1,83)+(4,00*3,21)	= mq. = mq. = mq.	28,37 242,88 20,00	INGRESSO PT UFFICI P1° SERVIZI P1°	mq.	291,25	
UNITA'	2	(18,40*12,51)+(1,00*4,40) (8,09*4,54)	= mq. = mq.	234,58 36,73	MAGAZZINO UFFICI E SERVIZI	mq.	271,31	
UNITA'	3	(18,40*12,51)+(1,00*4,40)	= mq.	234,58	MAGAZZINO	mq.	234,58	
UNITA'	4	(18,40*12,51)+(1,00*4,40)	= mq.	234,58	MAGAZZINO	mq.	234,58	
UNITA'	5	(18,40*12,51)+(1,00*4,40)	= mq.	234,58	MAGAZZINO	mq.	234,58	
UNITA'	6	(18,40*13,09)+(1,00*4,98) (8,09*4,54)	= mq. = mq.	245,84 36,73	MAGAZZINO UFFICI E SERVIZI	mq.	282,57	
UNITA'	7	(18,40*12,51)+(1,00*4,40) (8,09*4,54)	= mq. = mq.	234,58 36,73	MAGAZZINO UFFICI E SERVIZI	mq.	271,31	
UNITA'	8	(18,40*12,51)+(1,00*4,40)	= mq.	234,58	MAGAZZINO	mq.	234,58	
UNITA'	9	(18,40*12,51)+(1,00*4,40)	= mq.	234,58	MAGAZZINO	mq.	234,58	
UNITA'	10	(18,40*12,51)+(1,00*4,40)	= mq.	234,58	MAGAZZINO	mq.	234,58	
UNITA'	11	(18,40*12,98)+(1,00*4,30)	= mq.	243,13	MAGAZZINO	mq.	243,13	
UNITA'	12	(18,40*25,49)-(6,12*3,01)-(4,46*2,23)+(4,40*1,00) (4,52*1,76)+(4,46*1,83)	= mq. = mq.	445,05 16,12	MAGAZZINO UFFICI E SERVIZI	mq.	461,17	
UNITA'	12/A	(6,12*3,01)+(4,46*2,23) (18,40*13,20) (3,91*1,83)+(4,00*3,21)	= mq. = mq. = mq.	28,37 242,88 20,00	INGRESSO PT UFFICI P1° SERVIZI P1°	mq.	291,25	
UNITA'	13	(18,40*12,51)+(1,00*4,40) (8,09*4,54)	= mq. = mq.	234,58 36,73	MAGAZZINO UFFICI E SERVIZI	mq.	271,31	
UNITA'	14	(18,40*12,51)+(1,00*4,40) (8,09*4,54)	= mq. = mq.	234,58 36,73	MAGAZZINO UFFICI E SERVIZI	mq.	271,31	
UNITA'	15	(18,40*12,51)+(1,00*4,40) (8,09*4,54)	= mq. = mq.	234,58 36,73	MAGAZZINO UFFICI E SERVIZI	mq.	271,31	
UNITA'	16	(18,40*12,51)+(1,00*4,40) (8,09*4,54)	= mq. = mq.	234,58 36,73	MAGAZZINO UFFICI E SERVIZI	mq.	271,31	
UNITA'	17	(18,40*13,09)+(1,00*4,98) (8,09*4,54)	= mq. = mq.	245,84 36,73	MAGAZZINO UFFICI E SERVIZI	mq.	282,57	
UNITA'	18	(18,40*12,51)+(1,00*4,40) (8,09*4,54)	= mq. = mq.	234,58 36,73	MAGAZZINO UFFICI E SERVIZI	mq.	271,31	
UNITA'	19	(18,40*12,51)+(1,00*4,40) (8,09*4,54)	= mq. = mq.	234,58 36,73	MAGAZZINO UFFICI E SERVIZI	mq.	271,31	
UNITA'	20	(18,40*12,51)+(1,00*4,40) (8,09*4,54)	= mq. = mq.	234,58 36,73	MAGAZZINO UFFICI E SERVIZI	mq.	271,31	
UNITA'	21	(18,40*12,51)+(1,00*4,40) (8,09*4,54)	= mq. = mq.	234,58 36,73	MAGAZZINO UFFICI E SERVIZI	mq.	271,31	
UNITA'	22	(18,40*12,98)+(1,00*4,30) (8,09*4,54)	= mq. = mq.	243,13 36,73	MAGAZZINO UFFICI E SERVIZI	mq.	279,86	
TOTALE							mq.	6.713,55

PIANTA PIANO TERRA

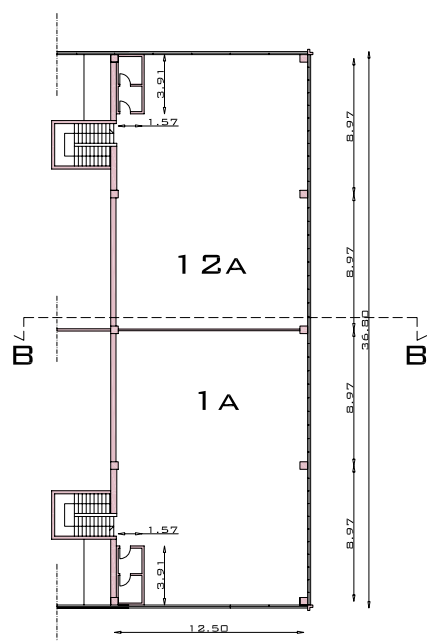


SCALA 1:500

FABBRICATO
A
PIANTA

PROGETTO

PIANTA PIANO PRIMO



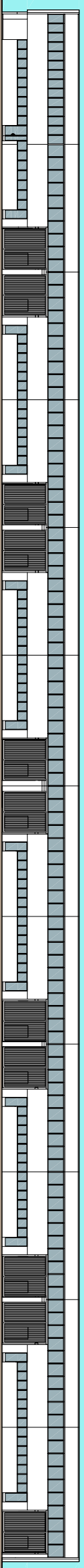
SCALA 1:500

FABBRICATO
A
PIANTA

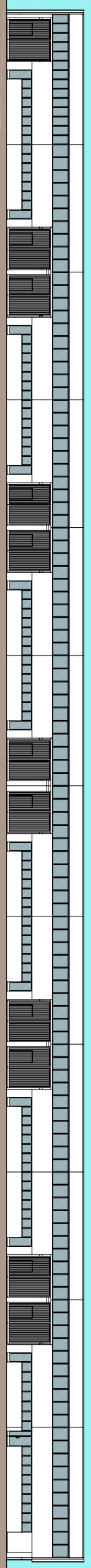
PROGETTO

PROSPETTI

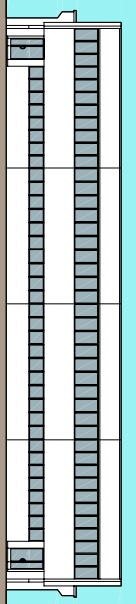
PROSPETTO NORD



PROSPETTO SUD



PROSPETTO EST



PROSPETTO OVEST

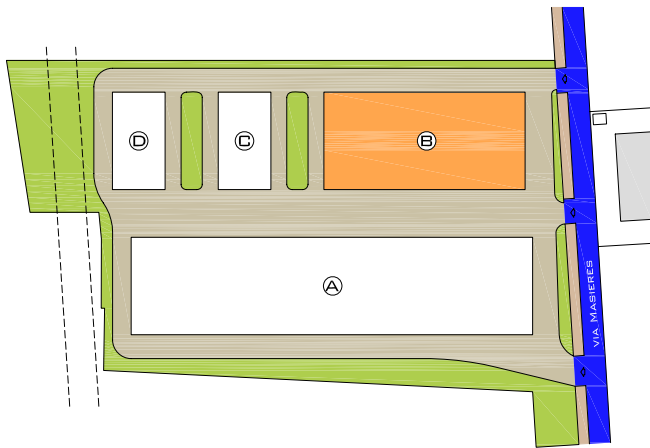


FABBRICATO
A
PROSPETTI

PROGETTO

PROGETTO

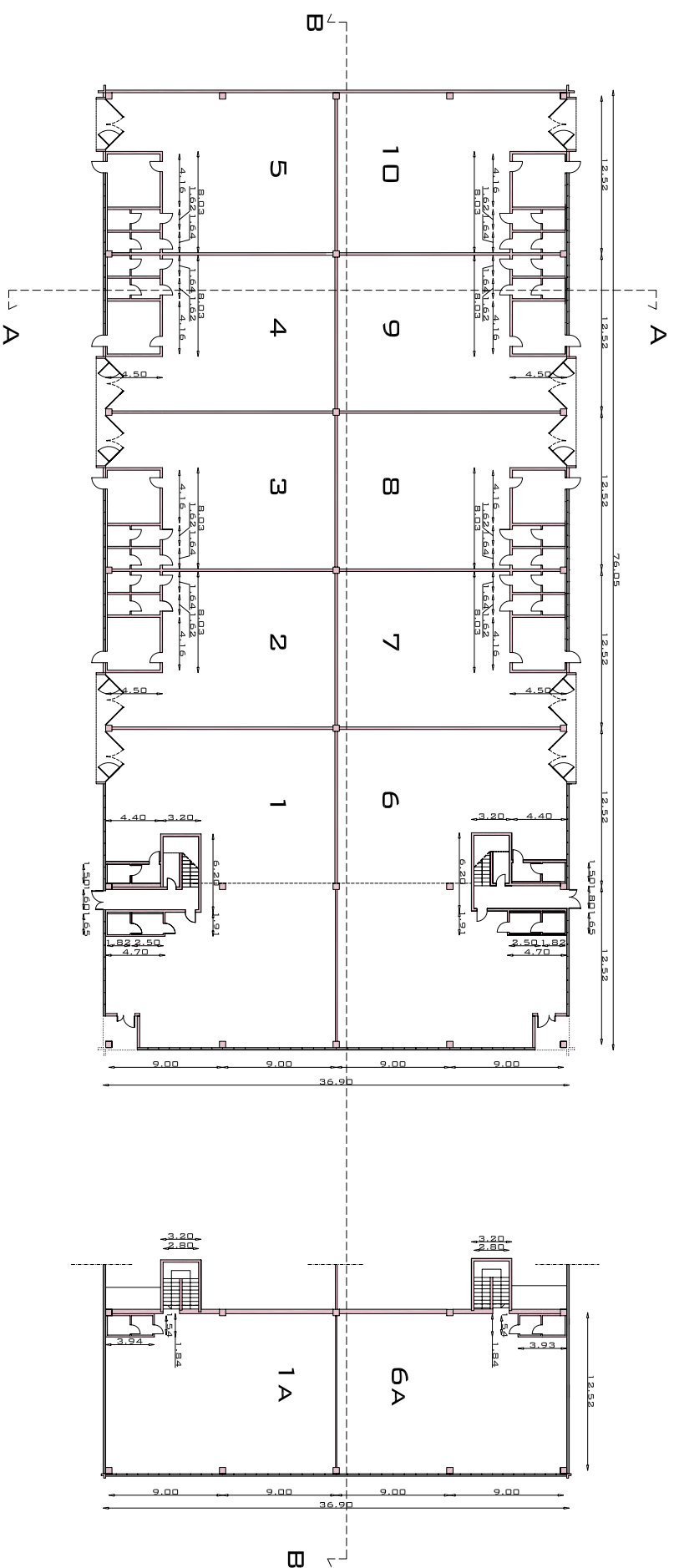
FABBRICATO "B"



DIMENSIONI FABBRICATO "B"

UNITA'	1	(18,45*25,50)-(6,00*3,00)-(2,00*4,50)+(4,40*1,00) (4,70*2,01)+(4,50*1,93)	= mq. = mq.	447,88 18,13	PIANO TERRA SERVIZI PT		mq.	466,01
UNITA'	1/A	(6,00*3,00)+(2,00*4,50) (13,22*18,45) (1,84*3,93)+(3,20*3,92)	= mq. = mq. = mq.	27,00 243,91 19,78	INGRESSO PT UFFICI P1° SERVIZI P1°		mq.	290,69
UNITA'	2	(18,45*12,52)+(1,00*4,40) (8,03*4,51)	= mq. = mq.	235,39 36,22	MAGAZZINO UFFICI E SERVIZI		mq.	271,61
UNITA'	3	(18,45*12,52)+(1,00*4,40) (8,03*4,51)	= mq. = mq.	235,39 36,22	MAGAZZINO UFFICI E SERVIZI		mq.	271,61
UNITA'	4	(18,45*12,52)+(1,00*4,40) (8,03*4,51)	= mq. = mq.	235,39 36,22	MAGAZZINO UFFICI E SERVIZI		mq.	271,61
UNITA'	5	(18,45*12,98)+(1,00*4,30) (8,03*4,51)	= mq. = mq.	243,78 36,22	MAGAZZINO UFFICI E SERVIZI		mq.	280,00
UNITA'	6	(18,45*25,50)-(6,00*3,00)-(1,80*4,50)+(4,40*1,00) (4,70*2,01)+(4,50*2,10)	= mq. = mq.	448,78 18,90	MAGAZZINO UFFICI E SERVIZI		mq.	467,68
UNITA'	6/A	(6,00*3,00)+(1,80*4,50) (13,22*18,45) (1,80*3,94)+(3,20*3,92)	= mq. = mq. = mq.	26,10 243,91 19,64	INGRESSO PT UFFICI P1° SERVIZI P1°		mq.	289,65
UNITA'	7	(18,45*12,52)+(1,00*4,40) (8,03*4,51)	= mq. = mq.	235,39 36,22	MAGAZZINO UFFICI E SERVIZI		mq.	271,61
UNITA'	8	(18,45*12,52)+(1,00*4,40) (8,03*4,51)	= mq. = mq.	235,39 36,22	MAGAZZINO UFFICI E SERVIZI		mq.	271,61
UNITA'	9	(18,45*12,52)+(1,00*4,40) (8,03*4,51)	= mq. = mq.	235,39 36,22	MAGAZZINO UFFICI E SERVIZI		mq.	271,61
UNITA'	10	(18,45*12,98)+(1,00*4,30) (8,03*4,51)	= mq. = mq.	243,78 36,22	MAGAZZINO UFFICI E SERVIZI		mq.	280,00
TOTALE								mq 3.703,69

PIANTA PIANO TERRA E PRIMO

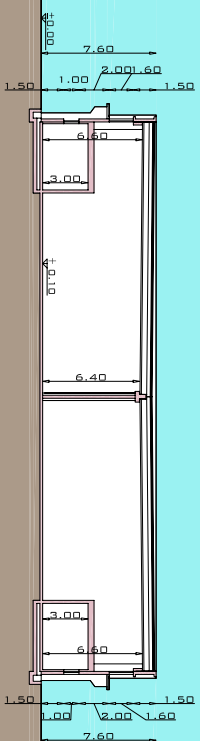


SCALA 1:500

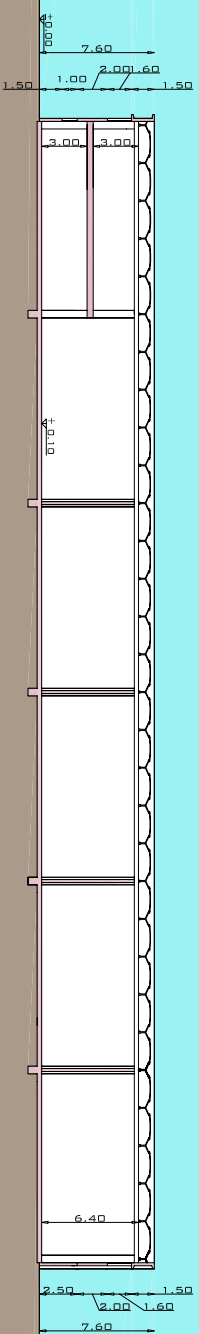
FABBRICATO B
PIANTA

PROGETTO

SEZIONE A-A



SEZIONE B-B



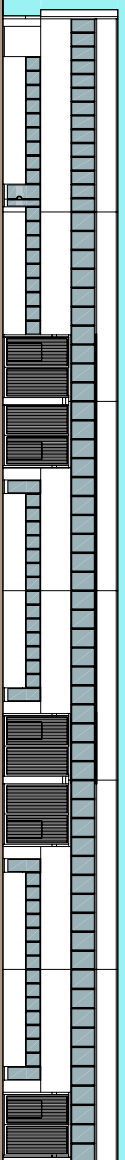
SCALA 1:500

FABBRICATO
B
SEZIONI

PROGETTO

PROSPETTI

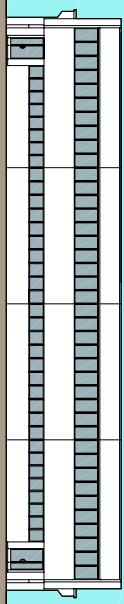
PROSPETTO NORD



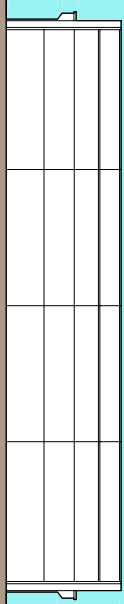
PROSPETTO SUD



PROSPETTO EST



PROSPETTO OVEST

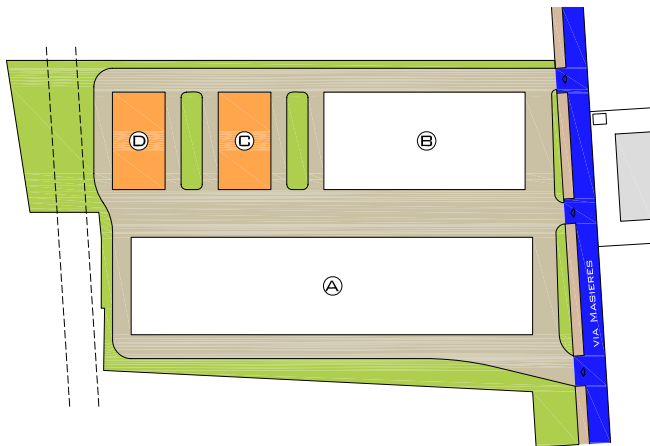


FABBRICATO
B
PROSPETTI

PROGETTO

PROGETTO

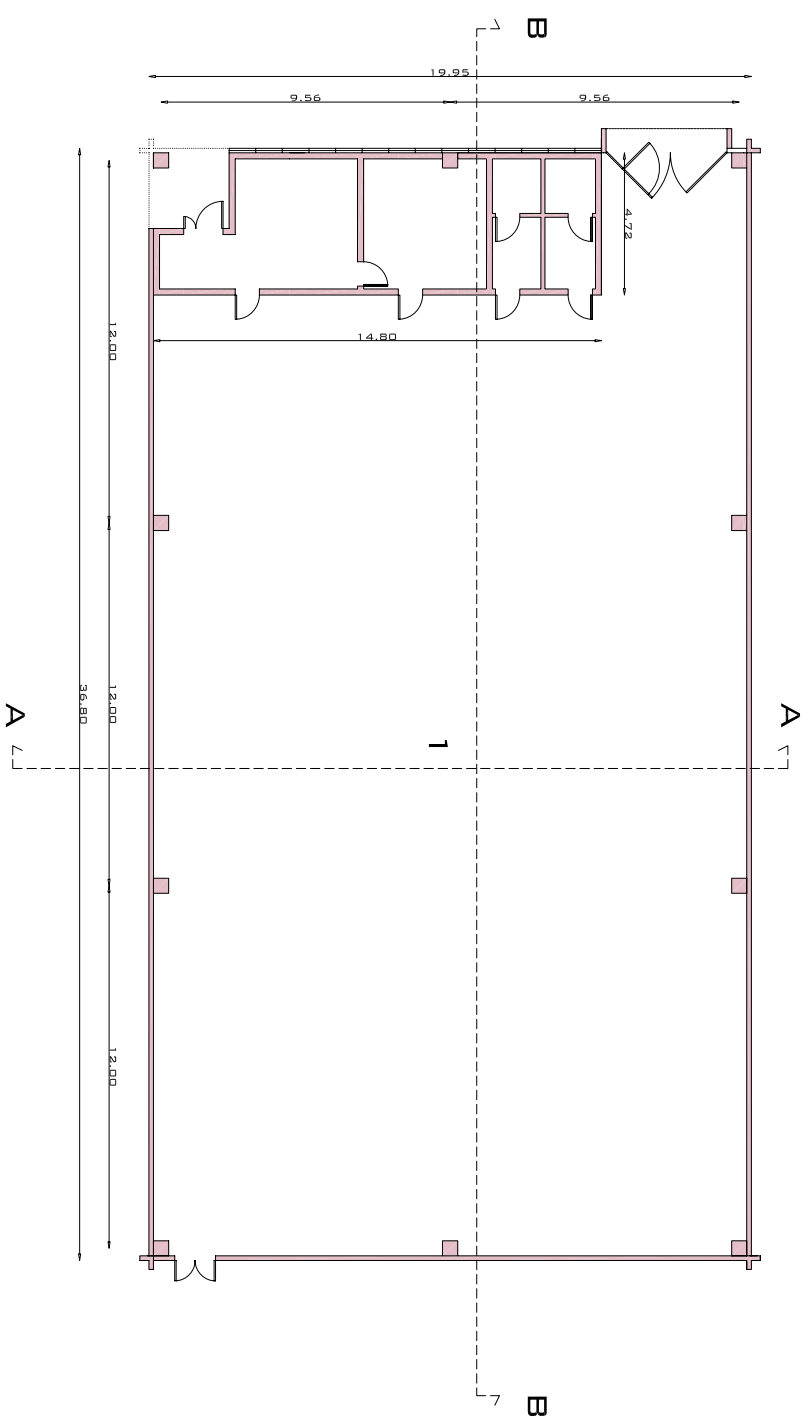
FABBRICATO "C"- "D"



DIMENSIONI FABBRICATO "C" - "D"

UNITA'	1	(36,80*19,95)+(1,05*4,30) (14,80*4,72)	= mq. = mq.	738,68 69,86	PIANO TERRA SERVIZI PT	mq.	808,54
TOTALE						mq	808,54

PIANTA PIANO TERRA



SCALA 1:250

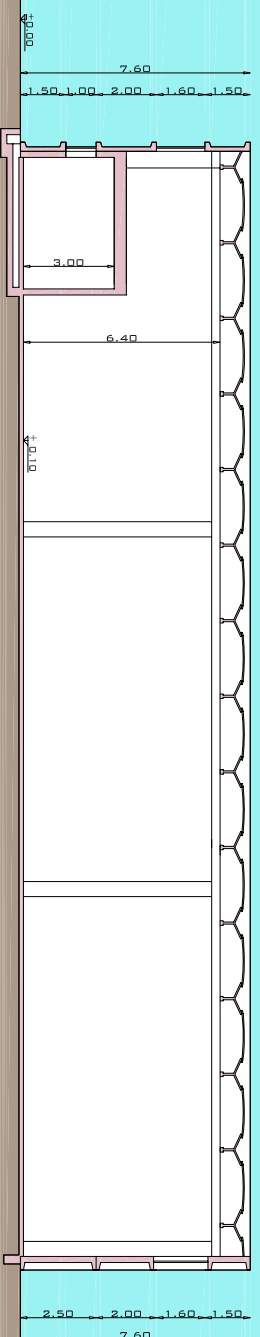
FABBRICATO
C-D
PIANTA

PROGETTO

SEZIONE A-A



SEZIONE B-B



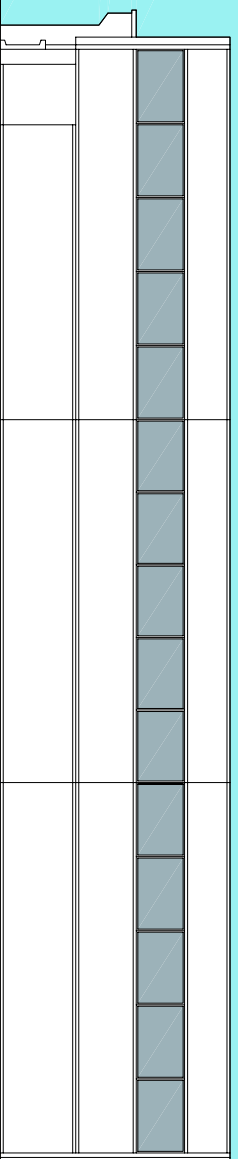
SCALA 1:250

FABBRICATO
C-D
SEZIONI

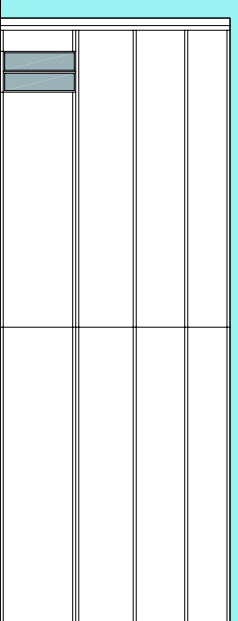
PROGETTO

PROSPETTI

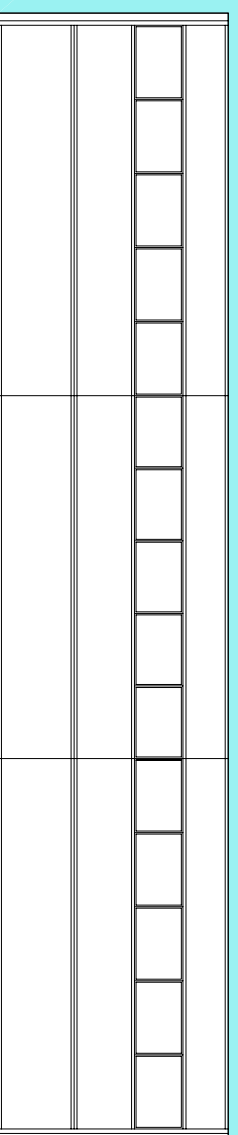
PROSPETTO EST



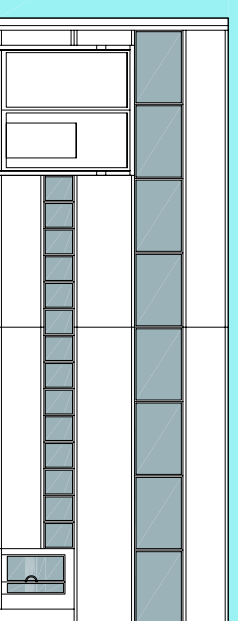
PROSPETTO NORD



PROSPETTO OVEST



PROSPETTO SUD



FABBRICATO
G-D
PROSPETTI

PROGETTO



Basso Cav. Angelo
COSTRUZIONI GENERALI
Industrialized Building Infrastructure

Dal 1989, un'idea che diventa.

Sede legale ed Amministrativa:

Via Pastore, 12/B - 31040 Postioma (TV)
Tel 0422.999311
Fax 0422.480280
E-mail costruzioni@gruppobasso.it
Web www.gruppobasso.it

Lefim

Promotion Real Estate Development
Sede legale ed Amministrativa:

Via Feltrina, 256 - 31100 TREVISO
Tel 0422.299311
Fax 0422.431860
E-mail info@lefim.it
Web www.gruppobasso.it

Sogeicom

Property Facility Management

Sede legale ed Amministrativa:

Via Feltrina, 256 - 31100 TREVISO
Tel 0422.299311
Fax 0422.431860
E-mail info@sogeicom.it
Web www.gruppobasso.it

INFO